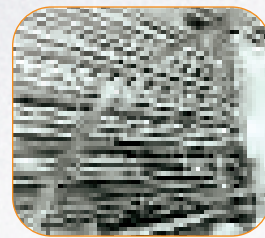


Our equipment will keep your operation running smoothly from start to finish.



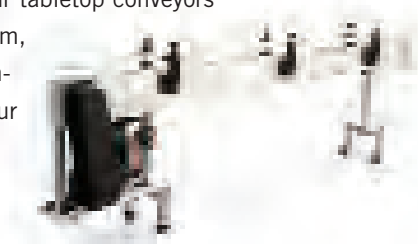
1 CABLE CONVEYOR SYSTEMS

We manufacture cable conveyor systems in many different heights and widths to accommodate your container configurations. Typically suspended from the ceiling, these systems are a very cost-effective way to move containers throughout your facility while controlling accumulation and surge. Common components include:

- Dividers and Combiners (PLC Controls)
- Eagle Belt Inclines
- Cable Splicing
- Air Elevators with Pushers
- Rod Chutes

2 TABLETOP CONVEYORS

Tabletop conveyors provide a more stable surface for your products. Our tabletop conveyors are made of aluminum, painted steel or stainless steel to meet your unique functional requirements.

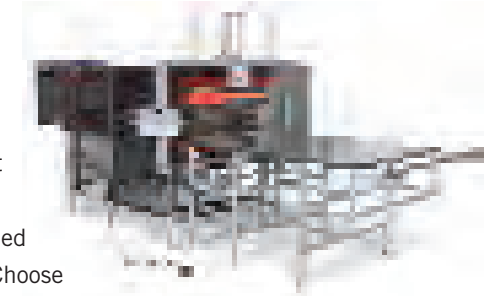


3 MATTOP CONVEYORS

We build modular mattop conveyors to your precise specifications.

4 RESIN HANDLING SYSTEMS

We can supply all the components of a complete resin handling system, including piping, vacuums and blenders.



5 BAGGING SYSTEMS

Our baggers collect your bottles into easy-to-handle sealed plastic packages. Choose semiautomatic or fully automatic systems.



6 DEBAGGING SYSTEMS

Manual and semi-automatic debaggers put your plastic containers back on the line at high speed. An optional "cold knife" cut off is available to open bags even more rapidly.

7 LEAK TESTERS

Inline and trimmer-mounted leak testers can be adapted to the shapes and sizes of your containers to help eliminate product loss. Weight checkers are also available to help you maintain quality control.

8 CUSTOM EQUIPMENT

In addition to these traditional material handling systems, we can help increase your efficiency with custom-built parts sorting, pick & place tooling, parts handling and assembly machines.

9 ANNEALING UNITS

Our annealing units provide in-line curing of plastic containers to ensure consistent container size. This assures volume stability and prevents costly under/over filling – whether containers are filled immediately or later.

